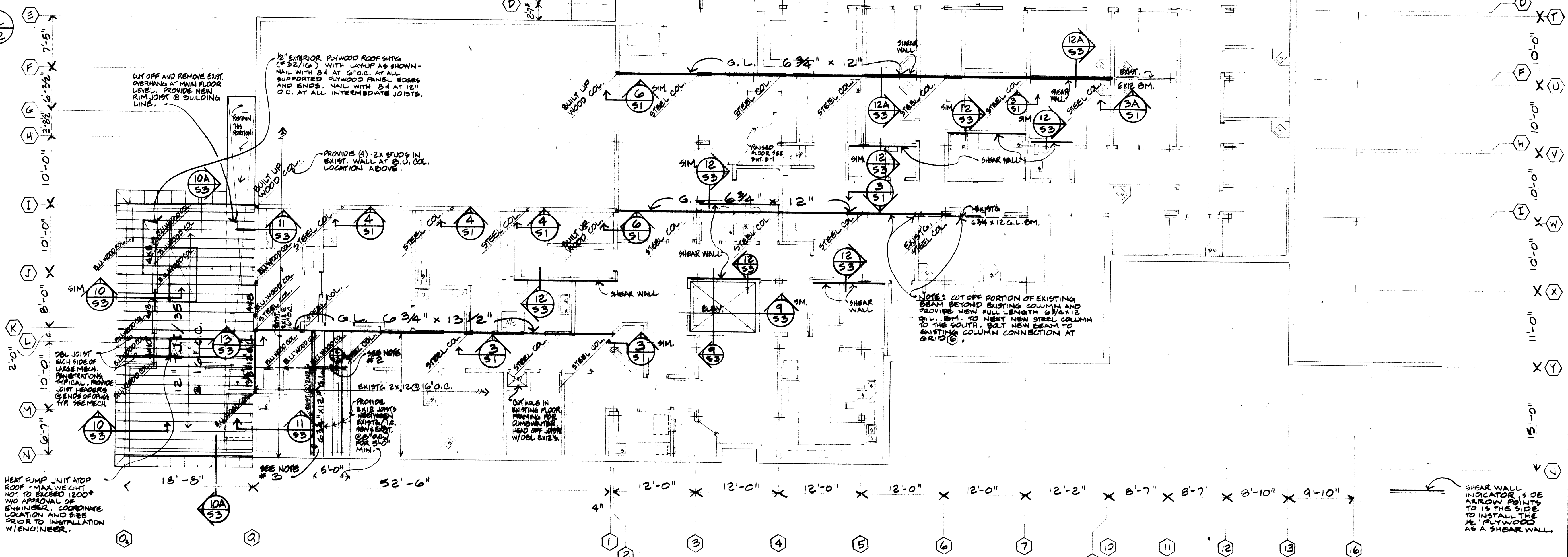


UPPER LEVEL FRAMING PLAN
SCALE 1/8" = 1'-0"

- NOTES:**
- ALL STEEL COLUMNS CALLED OUT ARE 3" Ø STANDARD STEEL PIPE COLUMNS AND SUPPORT THE INDICATED NEW OR EXISTING BEAMS (I.C. THE COLUMNS ARE FROM THE BASEMENT LEVEL TO THE BEAMS SHOWN ON THE MAIN FLOOR LEVEL OR FROM THE MAIN FLOOR LEVEL TO THE BEAMS AT THE ROOF AS SHOWN ON THE UPPER LEVEL FRAMING PLAN).
 - PROVIDE 4x12 HEADER BELOW JOISTS AND ATOP WALL FOR LENGTH OF WALL TO GRID (2) - SEE (14).
 - PROVIDE 6 3/4 x 12 G.L. BEAM ALONGSIDE EXISTING DOUBLE 2x12 BEAM. BOLT TOGETHER WITH 1/2" Ø M.B.'S AT 32" O.C. STAGGER FROM TOP TO BOTTOM AND LOCATE 3" FROM TOP OR BOTTOM. NOTE: DAP ENDS OF G.L. BM. TO MATCH BEARING OF 2x12'S.



LOWER LEVEL FRAMING PLAN
SCALE 1/8" = 1'-0"

GROUP HEALTH COOPERATIVE
ADDITIONS TO CEDAR HEIGHTS MEDICAL CENTER - PORT ORCHARD, WASH
SNIFFET AND FODDES ARCHITECTS

LOWER LEVEL UPPER LEVEL FRAMING PLANS

job number: 057
drawn:
date:



S2